

What's Not in the LSD Schedule and Day-to-Day Coordination

Will Oren,
for the LSD Team

May 16th 2012

Outside LSD Planning–SRF/Test Lab

- **SRF and Test Lab Activities**

- SRF – WFO, 12 GeV Production, Operations
- Test Lab addition-move activities, commissioning
- Test Lab renovations – TLA commissioning coordination, CTF/VTA/CMTF operations

- **Largest Potential Conflicts**

- 12 GeV cryomodule testing
- FEL ADMIRAL cryomodule rework
- WFO obligations

Outside LSD Planning–SRF/Test Lab

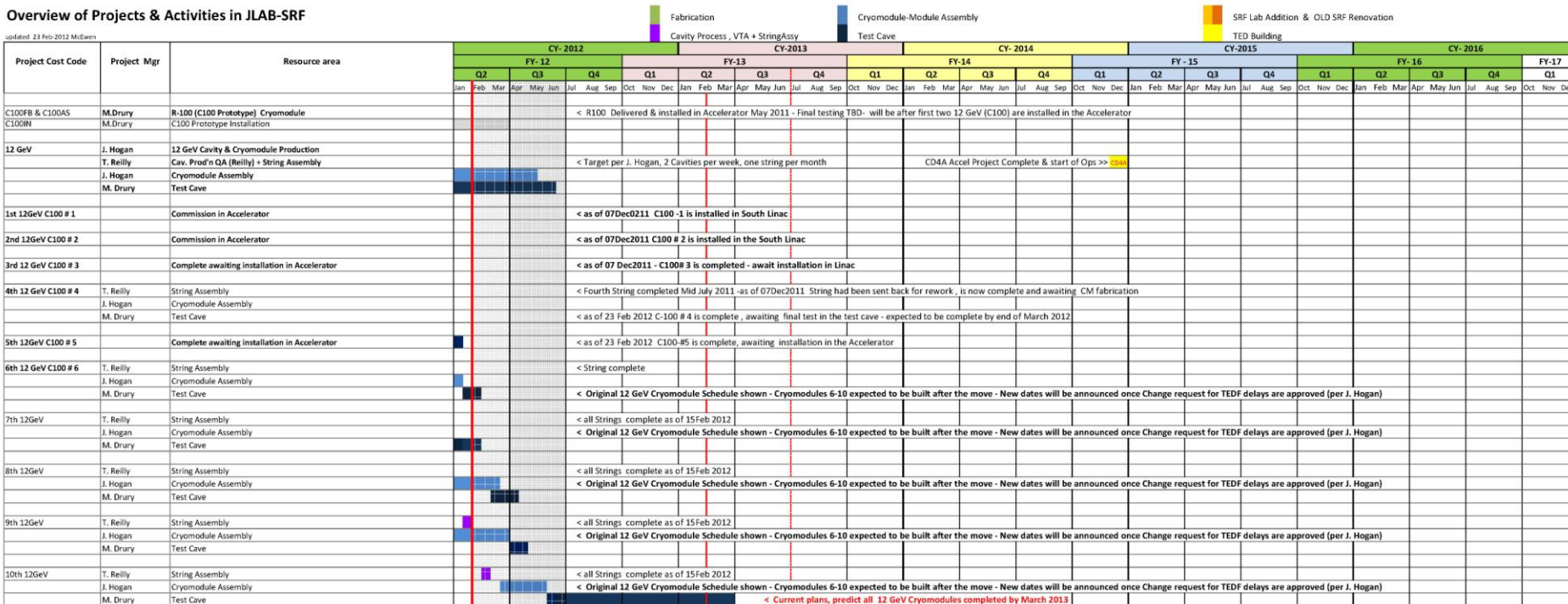
- **How is it Managed?**
 - Daily/weekly/as-needed coordination meetings
 - Facilities' schedules
 - SRF schedule

Outside LSD Planning-SRF

- SRF has a Comprehensive Schedule

Overview of Projects & Activities in JLAB-SRF

updated: 23 Feb 2012 MEdEwen



Outside LSD Planning–SRF

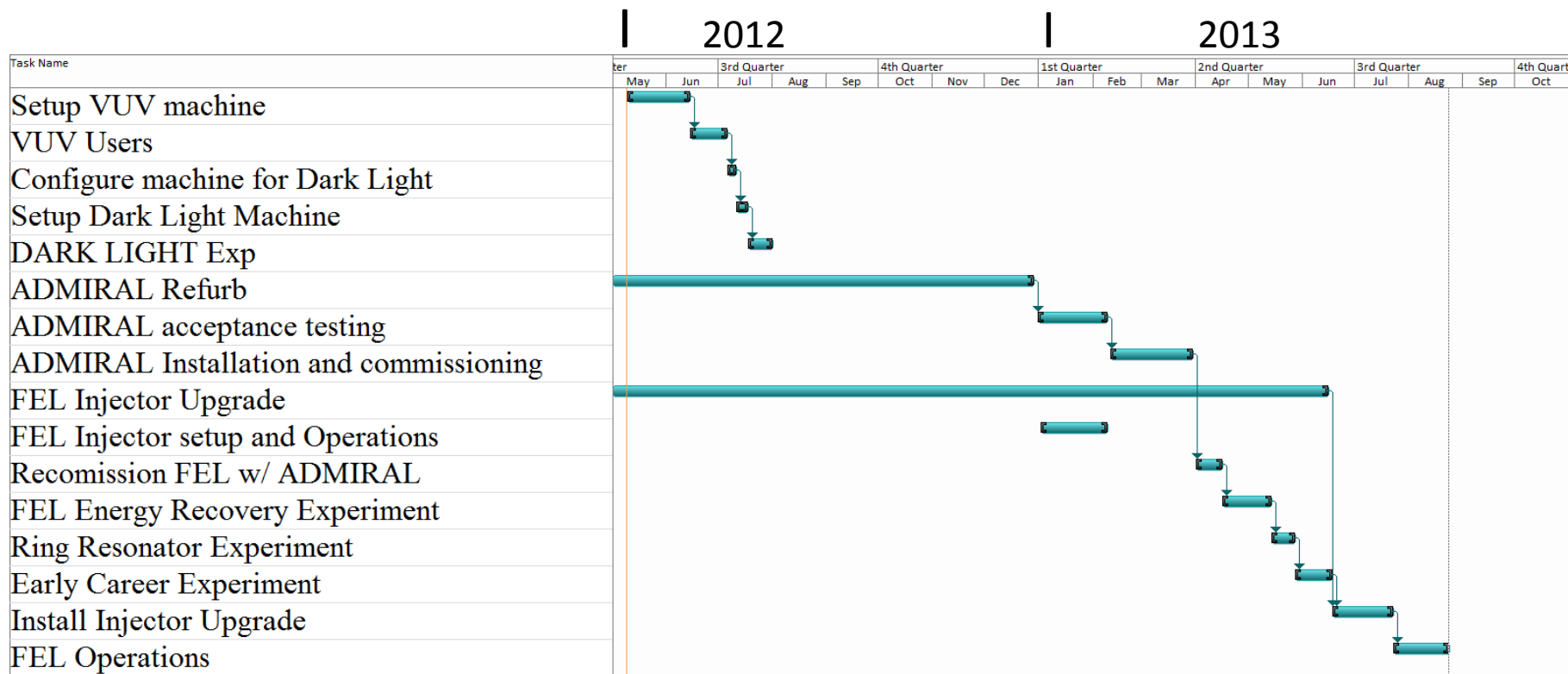
- ADMIRAL Rebuild Schedule**

Resource area	Start Date	End Date	CY- 2012			CY-2013		
			FY- 12			FY-13		
			Q2	Q3	Q4	Q1	Q2	Q3
Admiral CM Teardown -Rebiuld to C100 Equivalent	FY12	Jan-13						
1. Admiral Tear down	Mar-12	Apr-12						
2. Admiral Cavity Processing _EP	Jun-12	Sep-12						
3. Procurements								
3. Admiral reassembly and delivery	Sep-12	Jan-13						
4. Commission & final Test in the SRF Test cave	Jan-13	??						

< FEL would like QCM completed by 31-Jan2013

Outside LSD Planning–SRF

- FEL Top Level Schedule-“How ADMIRAL fits in”



Outside LSD Planning–SRF

- **Potential Issues**

- If ADMIRAL delivery slides, it will also impact Installation, Alignment, and RF crews.
- If installation is delayed, then FEL may want to push the date back to coincide with injector upgrade work.

Outside LSD Planning–Cryogenics

- **Cryogenics**

- Fine details of CHL2 and Hall D installation/commissioning (Major activities are captured in the LSD schedule)
- Operations – CHL1, ESR, CTF
- CHL1 20yr maintenance & TL service (to be included in upcoming change request)
- UIM – CTF work
- WFO – NASA, MSU

- **How Managed?**

- 12 GeV schedule and status meetings
- Internal schedule in development with PMI-weekly update meetings starting tomorrow.
- Daily/weekly/as-needed coordination meetings

Outside LSD Planning–Physics

- **Physics 12 GeV and “Out Year” Experiments**
 - Hall B – magnets/detectors/installation
 - Hall C – magnets/detectors/installation
 - Hall A – Moller/SOLID/etc.
- **How Managed?**
 - 12 GeV schedule and status meetings
 - Physics “over arching” schedule (see W. Akers’s presentation)
 - Regular Physics Division coordination meetings

Outside LSD Planning–FEL/Misc.

- **Accelerator/Hall A & D Hot Checkout & Commissioning Activities**
 - Should these be included??
- **FEL**
 - “Internal scope” managed by FEL staff
 - FEL operations
- **UIM Projects – FY’14**
 - 40 MVA sub upgrade
 - Electrical distribution cable upgrade
 - Backup cooling towers at N & S Access Buildings
 - CTF upgrade
- **Dogleg Upgrades– FY’14**
- **11 GeV Separation– FY’13/14**
 - Building extension in FY’13
 - Process equipment installation in FY’14

Outside LSD Planning–FEL/Misc.

- **Injector Zone 0L04 RF Upgrade – FY'13 (funding??)**
- **Counting House Renovation – FY'13**
 - Impact on Physics workflow has not be accommodated

- **Management Through**
 - Facilities' schedules
 - Designated project managers:
 - D. Napier (Doglegs),
 - M. Spata (11 GeV separation),
 - M. Solaroli (UIM),
 - J. Creel (CTF line item in UIM)
 - As-needed coordination meetings

Day-to-Day Operations

- **Daily 8:00 AM Meeting**

- **Where:** Machine Control Center until renovations begin then ???
- **What:** Look ahead for that day and the upcoming week.
- **Who:** Work coordinators, Project coordinators, supervisors & “Long Shutdown Deputy (LSDD)”

Day-to-Day Operations

- **Biweekly Wednesday 1:30 Resource Meeting**
 - **Where:** MCC until renovations begin then???
 - **What:**
 - Glance back on previous 2 weeks,
 - Look ahead next 4-6 weeks w/any change orders
 - Safety performance review
 - Project & resource provider presentations where there are “challenges”
 - **Who:** Work coordinators, Project coordinators, & “Long Shutdown Deputy”

Day-to-Day Operations

- **Long Shutdown Deputies–Duties:**
 - Write the Daily Activity Summary, post it to the e-log & conduct the 8:00 Daily Summary Meeting reviewing the activities and the SAD Calendar.
 - Consult with the LSD Coordinator, Operability Manager, EES Liaisons, Director of Operations and Project Managers as necessary.
 - Organize and lead any additional meetings needed to tackle issues that affect day-to-day scheduling that are not addressed elsewhere.
 - Carry the LSDD phone (876-7997)

Day-to-Day Operations

- **Why Spend our Time in Meetings??**
 - **Human Performance/Work Planning**
 - Understand the **conditions** you are working in:
 - Who is in the same area or coming through
 - Is there hot work going on?
 - Is alarm testing going on: Fire, ODH,
 - Power outages, Etc.
 - Understand the **context** you are working in:
 - Are we holding schedule & if not how is it being changed
 - Are there new folks working around you? What are their skills sets and plans?
 - The way you do this is to **communicate**